



*Hotel L'Archipel is the ultimate holiday destination for those in search of seclusion, tranquility, surreal natural beauty, sustainable luxury coupled with refined elegance, personalised service and Creole flair.*

Snug in its glorious niche in the north-east corner of Praslin, Hotel L'Archipel is a home away from home to new and returning guests offering the utmost in luxury and intimacy. The hotel's range of accommodation options include Family Suites, Senior Suites, Superior Rooms and Deluxe Rooms all nestled in a beautifully manicured tropical garden overlooking the hotel's private beach Anse Gouvernement and offering unparalleled views of the entire shimmering Côte d'Or bay, one of Seychelles' most exquisite beaches.

Praslin Island is the second largest island of Seychelles situated 40 km N.E. of Mahé, the main island.

### Restaurants & cocktail lounge

The two restaurants of Hotel L'Archipel are among the finest on Praslin offering enticing variations of Creole and international dishes. Located right on the beach, guests can enjoy the soft sea breeze and stunning ocean view from La Gigolette restaurant while La Feuille d'Or on the first floor offers a more secluded ambiance, ideal for when the weather does not allow for outdoor dining.

Not to be missed is the Saturday night Creole buffet proposing an excellent and varied offering of mouth-watering local cuisine. The hotel also caters for "Picnic Lunches" for hotel guests.

Hotel L'Archipel's bar & cocktail lounge adjoins the infinity pool and offers a wide selection of light meals, tantalising cocktails and refreshments. Perfectly located for sundowners and a nightcap.

Last order is taken at 9 pm. Bar Opening Hours: 08.00 am to 11.00 pm.

NB : Gentlemen are expected to wear long trousers after 7 pm at the bar and restaurants.

### Free activities

- Single and two-seater canoe
- Snorkelling equipment: mask, snorkel and fins
- Stand-up paddle board (SUP)

### Transportation

Daily Air Seychelles flights link the two islands within 20 minutes.

A fast ferry runs crossings daily with journeys lasting 60 minutes only.

Distance from Praslin Airport: 12km  
Distance from Praslin Jetty: 3 km

### Entertainment

Theme nights with musical entertainment  
Three buffets per week

### Paying activities

- On site dive centre
- Deep sea fishing
- Bottom fishing
- Excursions to neighbouring islands

### Check in & check out

Check in at **12:00 noon**

Check out at **10:00 am**

### Credit cards

American Express  
Visa  
Mastercard







## 2 FAMILY SUITES

The Family Suites are extremely spacious with a separate lounge and veranda, walk-in wardrobe and two ensuite bathrooms with double showers providing the extra comfort and functionality needed for families travelling with children. Located on the top floor of the main building, each suite offers sweeping views of the hotel grounds and Côte d'Or bay.

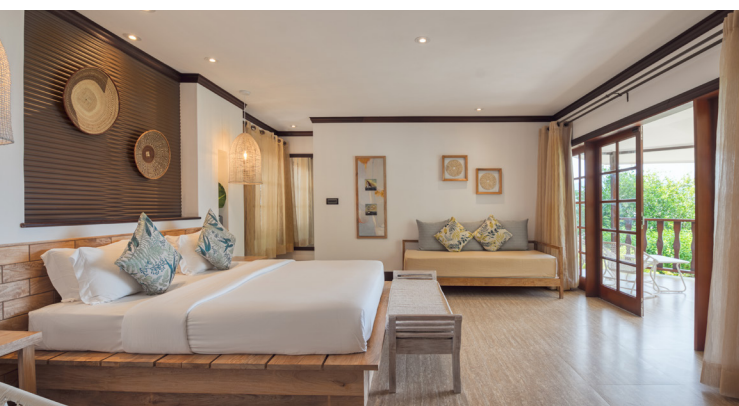
Area : 120 sqm. Accommodates up to 4 persons.  
Children under the age of 6 are not accepted.



## 10 SENIOR SUITES

The Senior Suites offer guests the utmost in comfort and luxury. Each suite is fitted with a plush king size bed, walk-in wardrobe, seating area and bathroom with a separate shower, and bathtub in select suites. Two of which are inter-connecting making them ideal for families or groups wanting to share their holiday experience in close proximity.

Area : 65 sqm. Accommodates 3 adults or 2 adults + 1 child (3 years and above).



## 16 DELUXE ROOMS

The Deluxe Rooms are spacious and intimate - ideally suited to honeymooners, senior guests or couples looking for a secluded and tranquil space to relax after a day at the beach. Scattered on the hillside, garden and just a few steps away from the beach, they all offer breathtaking views of the sea and lush tropical landscape. The bathroom is equipped with both a shower, and bathtub in select rooms.

Area : 60 sqm. Accommodates 3 adults or 2 adults + 1 child.  
Children under the age of 6 are not accepted.



## 4 SUPERIOR ROOMS

The Superior rooms are luxurious tropical cocoons located on the ground floor of the Colonial main building. Equipped with all essential amenities, a large seating area as well as an ensuite bathroom with a shower, the rooms also enjoy views of the ocean and garden.

Area : 60 sqm. Accommodates 3 adults or 2 adults + 1 child (3 years and above).

### Room features

Veranda or balcony  
Ensuite bathroom  
Seating area  
Air conditioning  
Flat screen television  
Free WIFI  
Room service (07h30 - 22h00)  
In-room safe  
Hair dryer  
Mini bar  
Tea & coffee making facilities  
Bathroom amenities

### Hotel features

Doctor on call  
Laundry service  
Safety deposit box  
Parking lot  
Free WIFI  
Restaurants  
Lobby bar & cocktail lounge  
Foreign currency exchange  
Reception 24/7  
Private shower room  
Infinity pool  
Billiard room  
Souvenir shop  
Car hire  
Dive centre  
Boat & fishing excursions  
Massage & spa treatments on request  
Baby sitting upon request

*Set on a hillside for a better view, Hotel L'Archipel is dotted with small paths and steps, making access difficult for people with reduced mobility. In this case, please ask us before booking.*

